



INDIGENOUS HOUSING & CHANGING NEEDS

**SA Government & Indigenous
Housing Organisation Partnership**

Timothy Day



NATIONAL ABORIGINAL
HEALTH STRATEGY (NAHS)
2000-03

Housing Replacement Program

Joint program delivery by:

**South Australian Aboriginal Housing
Authority (AHA)**

&

Anungu Pitjantjatjara Services (APS)



INDIGENOUS HOUSING & CHANGING NEEDS

SA ABORIGINAL HOUSING AUTHORITY

- **Established in 1998**
- **Aboriginal Board of Management**
- **Transfer of Aboriginal Housing Programs from SA Housing Trust**
- **Above program had been managed by the Aboriginal Housing Unit**
- **Delivery of Community Housing Program in the rural and remote areas of SA**



INDIGENOUS HOUSING & CHANGING NEEDS

ANANGU PITJANTJATJARA SERVICES

- **Established in the early 1990s**
- **Service provider to Anangu Pitjantjatjara**
- **Road building & maintenance**
- **Homelands essential services**
- **Housing R&M**
- **Staff and community housing**
- **Other community infrastructure**



NORTHERN TERRITORY

17 Communities

380 Houses

2700 people

100,000 square km

WESTERN AUSTRALIA

SOUTH AUSTRALIA



**5 COMMUNITIES WERE AWARDED
HOUSING REPLACEMENT PROGRAMS
UNDER NAHS**



● **UMUWA**

**ANANGU PITJANTJATJARA
SERVICES, BASED AT UMUWA WAS
MADE GRANTEE ORGANISATION ON
BEHALF OF THE COMMUNITIES**



Program Total of 49 Replacement Houses

LOCATION	NAHS Houses	AHA Houses	Total
Amata	8	8	16
Fregon	8	7	15
Mimili	5	4	9
Nyapari	2	1	3
Watarru	3	1	4

INDIGENOUS HOUSING & CHANGING NEEDS

- 1. UPK Report**
- 2. Community planning**
- 3. Process of housing evolution**
- 4. House design in relation to the NAHS program**



INDIGENOUS HOUSING & CHANGING NEEDS

UPK Report 1987

- 1. Washing people particularly children**
- 2. Washing clothes and bedding**
- 3. Waste water removal**
- 4. Prepare & store food**
- 5. Reduce crowding**
- 6. Separation of dogs & children**
- 7. Dust control**
- 8. Temperature control**
- 9. Reduce trauma**





INDIGENOUS HOUSING & CHANGING NEEDS

Community Planning: housing beyond the fence

- 1. Definition of roads**
- 2. Geometric, topographic and symbolic design**
- 3. Location of housing sites**
- 4. Designing for spatial permeability**
- 5. Generating open space: semi-public, semi-private**
- 6. Coordination with infrastructure planning**



MIMILI COMMUNITY 1998



AMATA COMMUNITY 1998



NYAPARI COMMUNITY 1998





FREGON COMMUNITY 1998



WATINUMA: NGINTAKA COMMUNITY LAYOUT PLAN



WATINUMA:
NGINTAKA
COMMUNITY
LAYOUT PLAN



ORTHAGONAL GRID WITH CONTIGUOUS HOUSE SITES



ROTATED GRID WITH SEPARATION BETWEEN HOUSE SITES



**ORTHAGONAL GRID WITH SEPARATION
BETWEEN HOUSE SITES**



FREGON



FREGON



MIMILI





INDIGENOUS HOUSING & CHANGING NEEDS

EVOLUTION OF HOUSING:

same mother, same father!

- 1. Design & supply contract with separate construct contract**
- 2. Development of a kit house based on prefabricated steel shed**
- 3. Increase in number of bed rooms**
- 4. Increase in veranda size**
- 5. Increase in living space**
- 6. Exterior ablutions eventually move inside, utilising veranda space**



Total Area 46.4 sqm
Living 24sqm, Veranda 29sqm,
Wet areas 8sqm



**Total Area 46.4 sqm
Living 24sqm, Veranda 29sqm,
Wet areas 8sqm**

**Note: original veranda enclosed, roof re-
pitched to extent of added veranda**



**Total Area 46.4 sqm
Living 24sqm, Veranda 29sqm,
Wet areas 8sqm**

VERANDAH ENCLOSED



**Total Area 162 sqm, Living 30 sqm,
Verandas 124 sqm, Wet Areas 8sqm**



**Total Area 205 sqm, Living 42 sqm,
Verandas 155 sqm, Wet Areas 8 sqm**



**Total Area 268 sqm, Living 57 sqm,
Verandas 203 sqm, Wet Areas 8 sqm**



**Total Area 268 sqm, Living 90 sqm,
Verandas 170 sqm, Wet Areas 8 sqm**



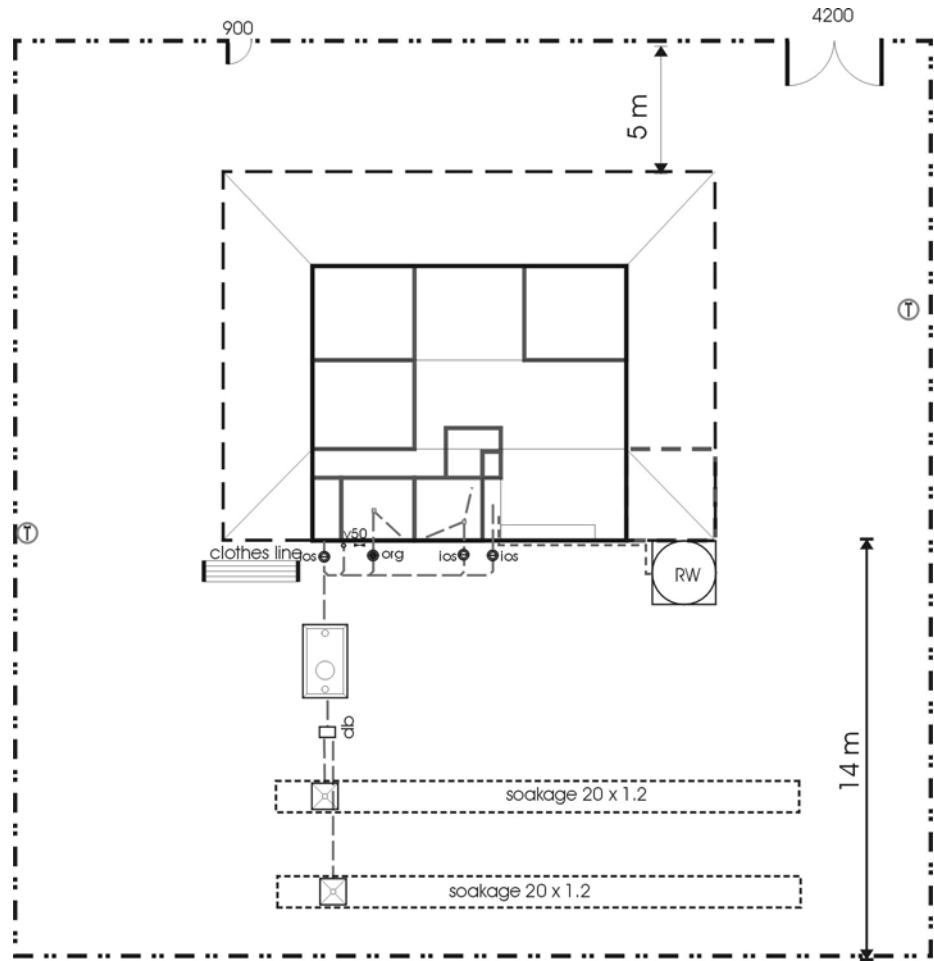
**Total Area 268 sqm, Living 105 sqm,
Verandas 155 sqm, Wet Areas 8 sqm**

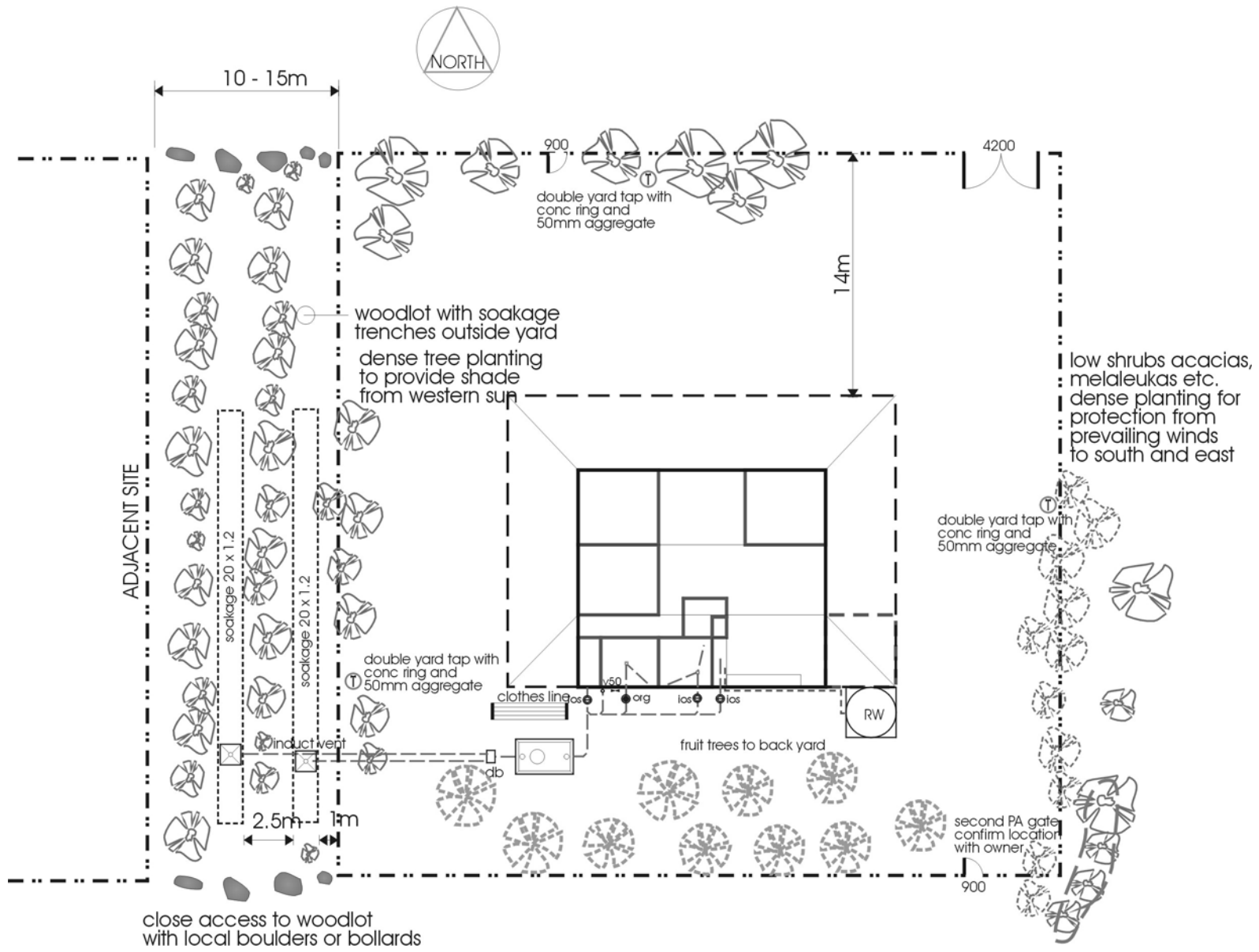


**Total Area 268 sqm, Living 108 sqm,
Verandas 136 sqm, Wet Areas 22 sqm**









INDIGENOUS HOUSING & CHANGING NEEDS

NAHS HOUSE DESIGNS: interior & exterior space

- 1. Functional differentiation of space**
- 2. House as a camp concept**
- 3. Requirement for stylistic & material similarity**
- 4. Passive solar design**
- 5. Exterior spaces**
- 6. Interior spaces**
- 7. Detailing & material selections**



HOUSE AS A CAMP



PASSIVE SOLAR DESIGN

SUMMER & WINTER SUN

**DESIGN OPTIMISED FOR
HOT SUMMERS**



SUMMER & WINTER SUN



CHANGE IN ORIENTATION



USE OF NORTH EAST SIDE



**Total Area 206 sqm, Living 110 sqm,
Veranda 84 sqm, Wet Areas 12 sqm**



House Type A



**Total Area 206 sqm, Living 110 sqm,
Veranda 84 sqm, Wet Areas 12 sqm**

House Type A



**Total Area 206 sqm, Living 110 sqm,
Veranda 84 sqm, Wet Areas 12 sqm**

House Type A



**CAPACITY TO ISOLATE
INTERNAL SPACE**



**WET AREA
SET DOWN**



**Total Area 201 sqm, Living 102 sqm,
Veranda 85 sqm, Wet Areas 14 sqm**

House Type B



ACCESS TO BED 2 THROUGH BED 3
Conditional recommendation by Saverton & George 1971 in
Memmott 1991



**Total Area 156 sqm, Living 70 sqm,
Verandas 73 sqm, Wet Areas 13 sqm**



House Type C



**Total Area 156 sqm, Living 70 sqm,
Verandas 73 sqm, Wet Areas 13 sqm**

House Type C



**Total Area 156 sqm, Living 70 sqm,
Verandas 73 sqm, Wet Areas 13 sqm**

House Type C with home improvements









