



**Australian Government**

**Department of Family and Community Services**

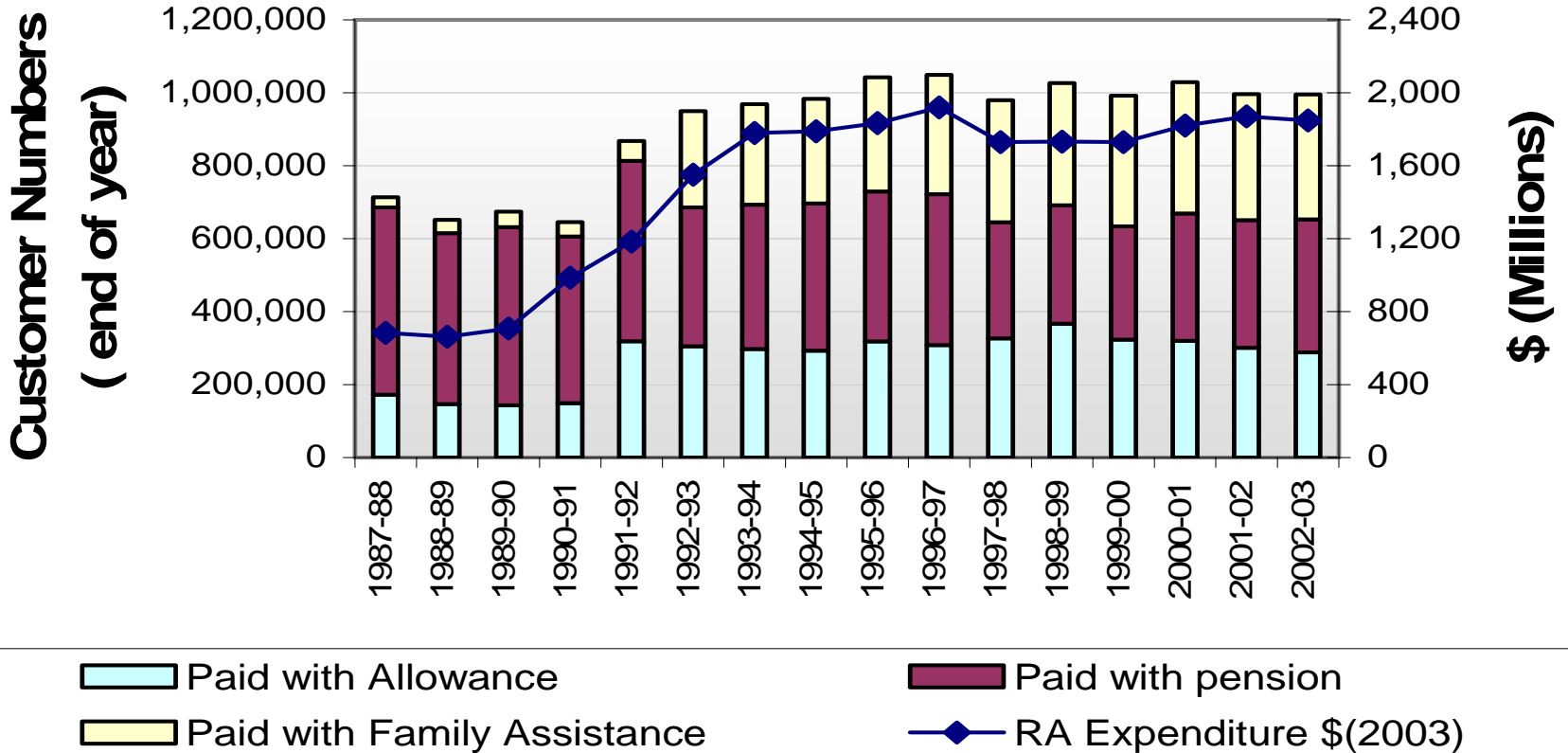
# Rent Assistance Facts and Fiction

*Martin Burgess*

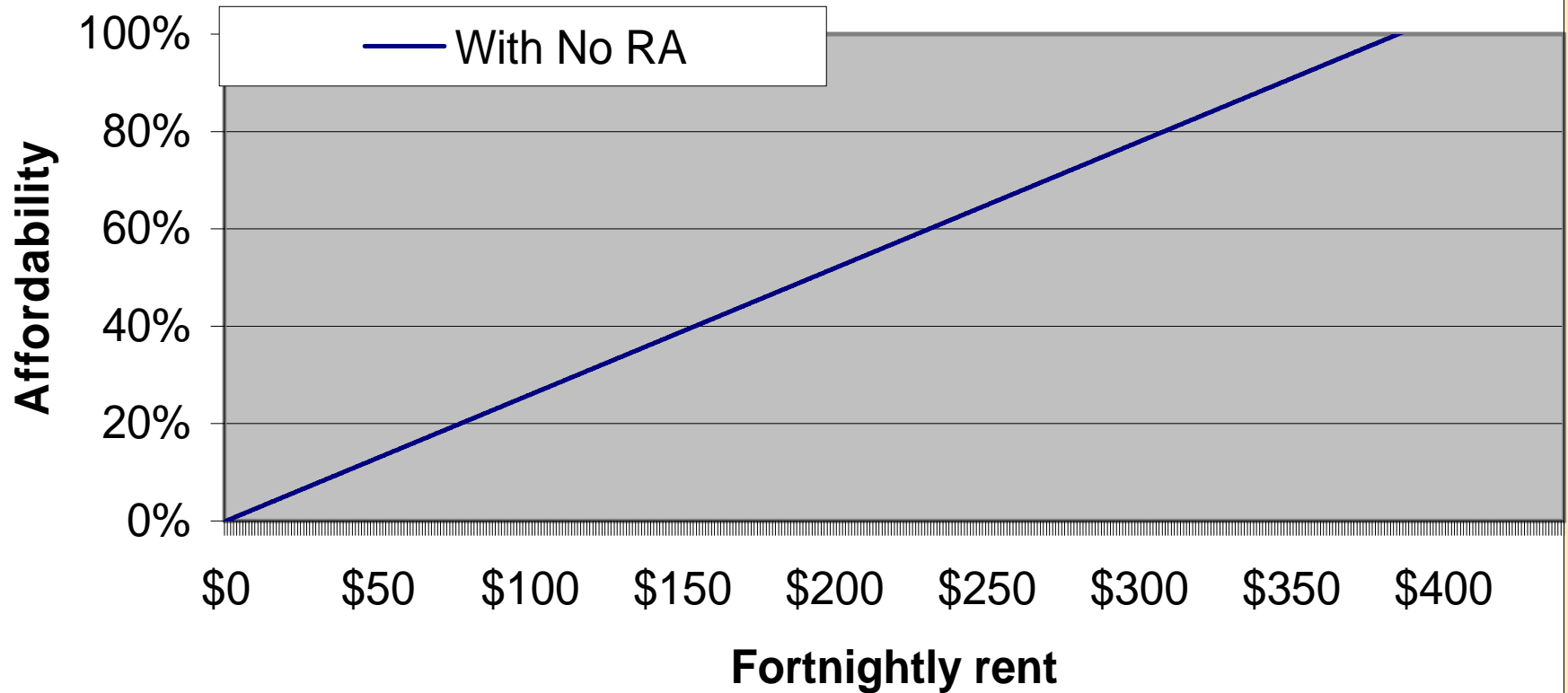
*Housing Support Branch*

*fac* making a difference

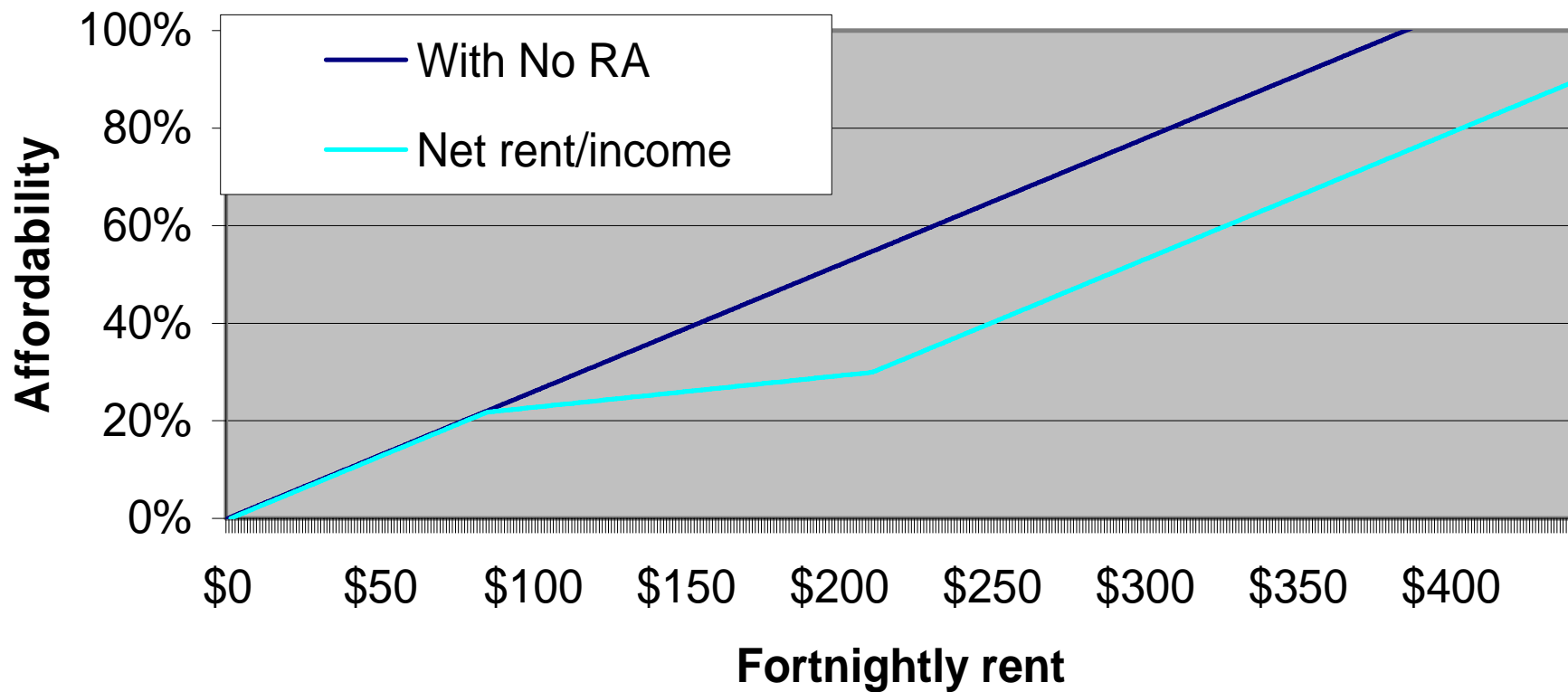
## Rent Assistance Outlays and Customer Numbers (1990-2003)



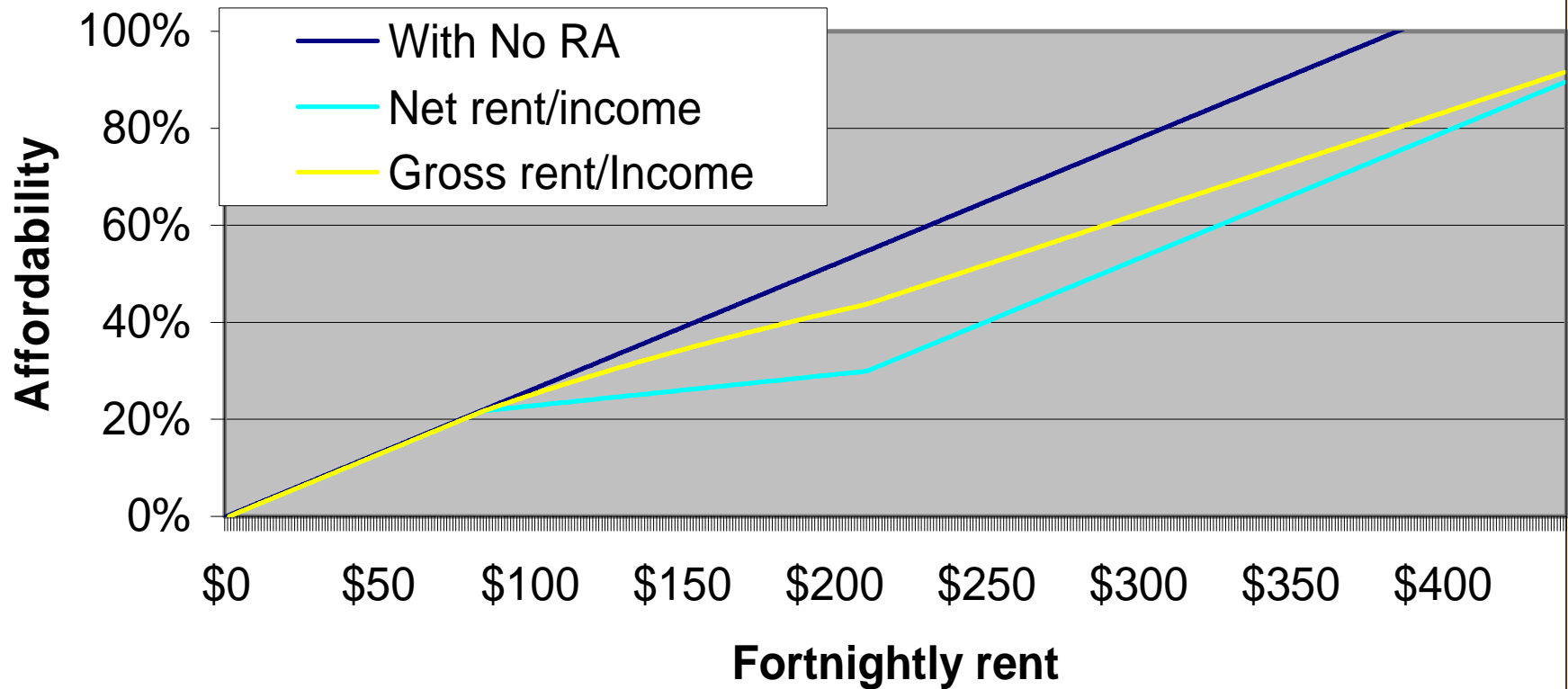
## Single Newstart recipient, no private income



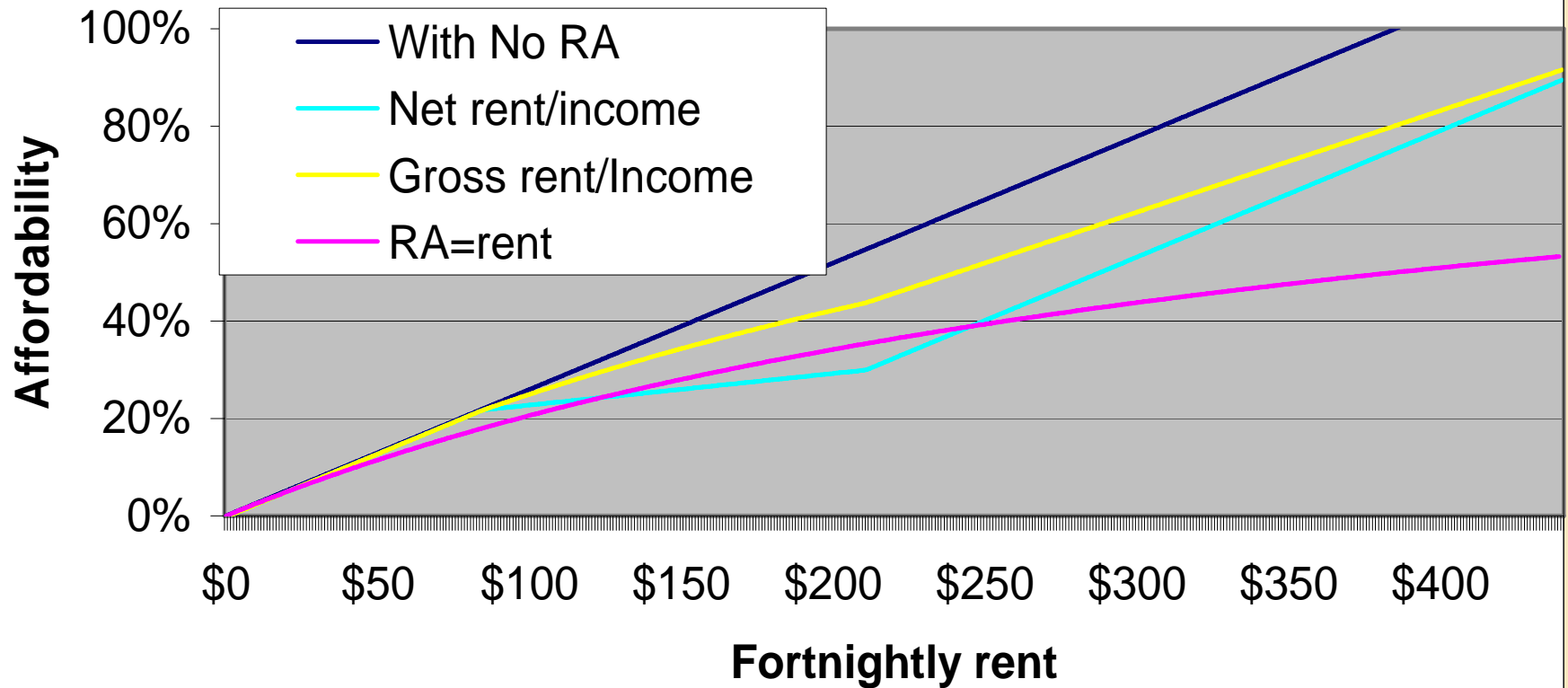
### Single Newstart recipient, no private income



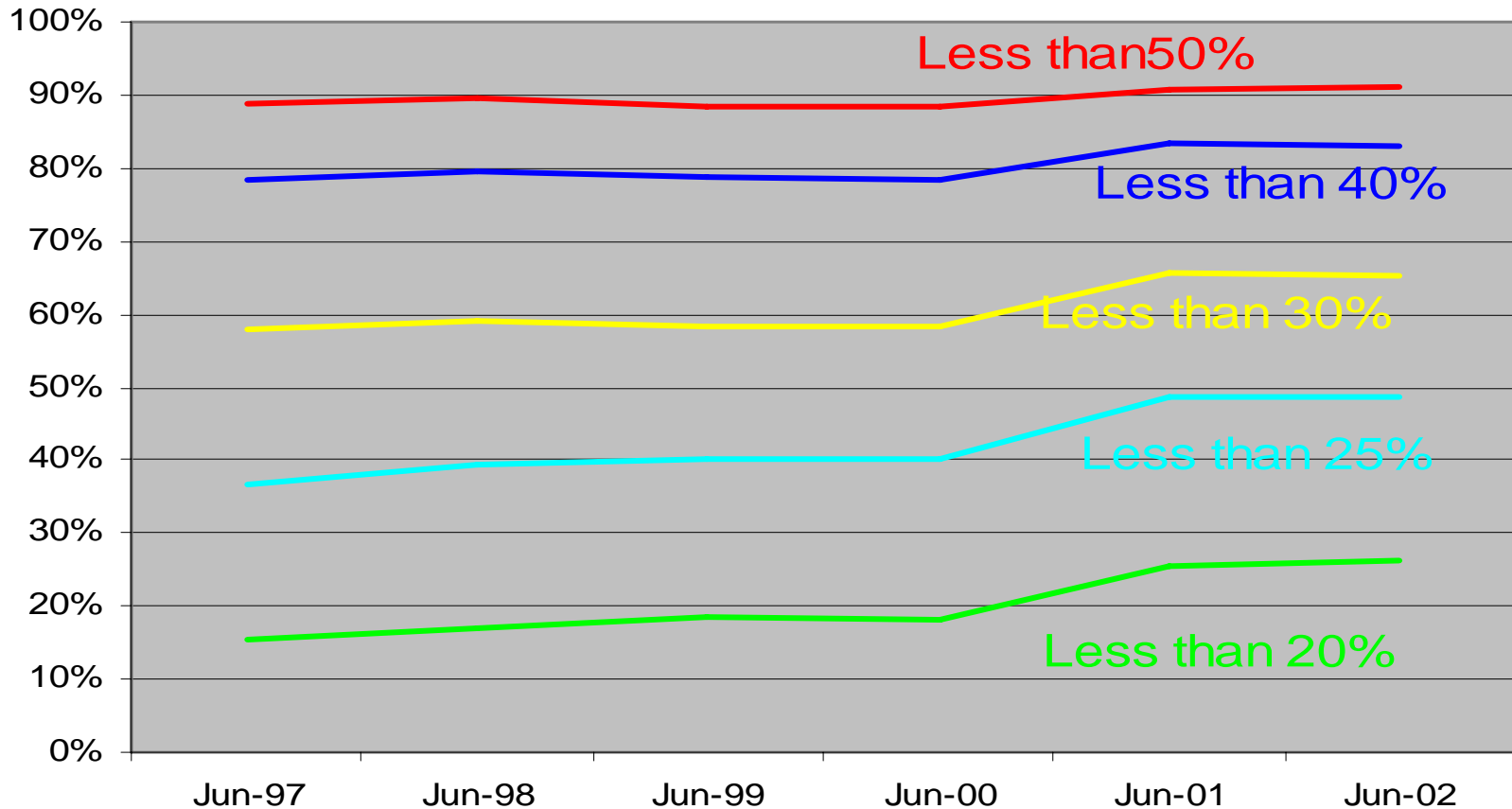
## Single Newstart recipient, no private income



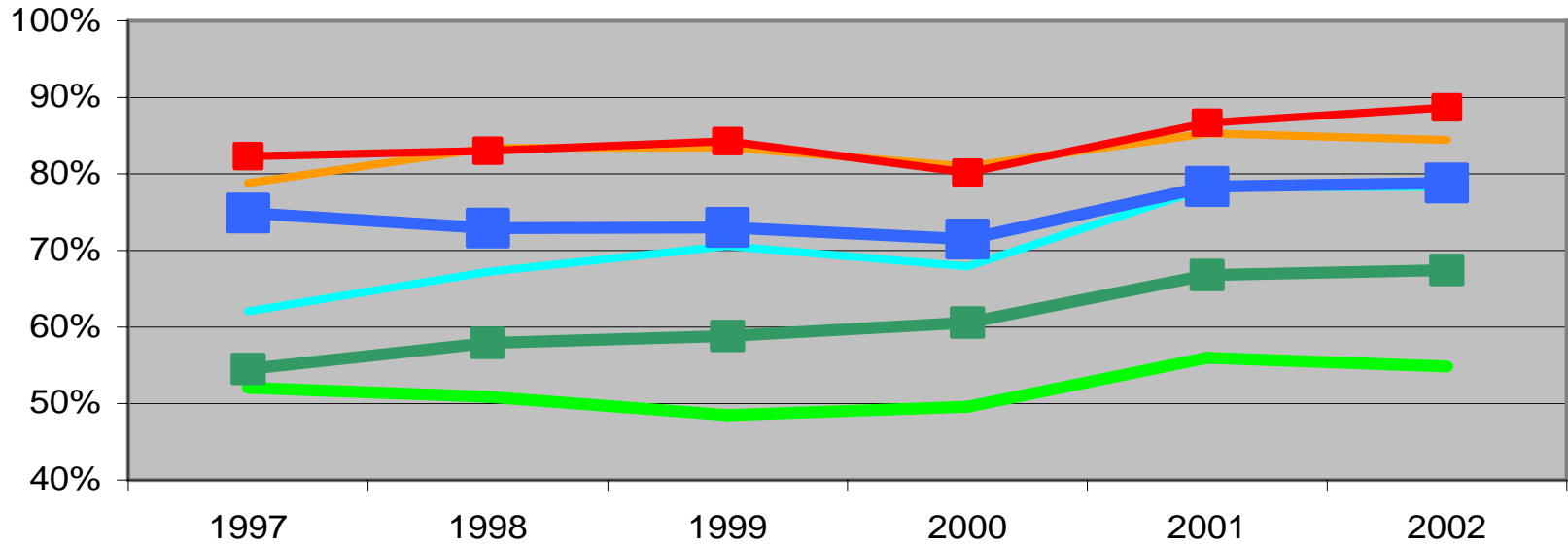
## Single Newstart recipient, no private income



## Rent Assistance recipients paying less than specified proportion of income on rent

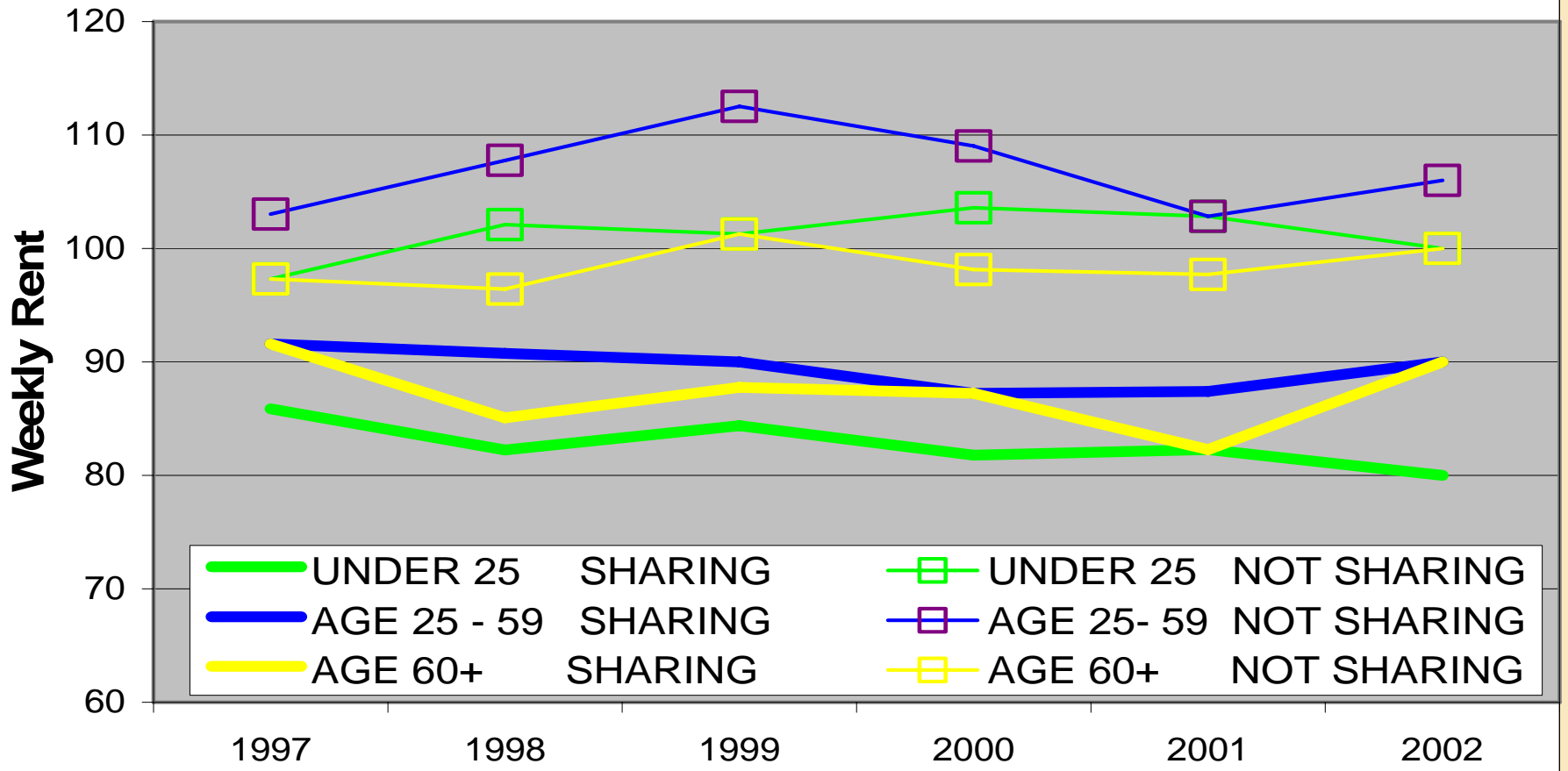


## Rent Assistance recipients paying less than 30% of income on rent

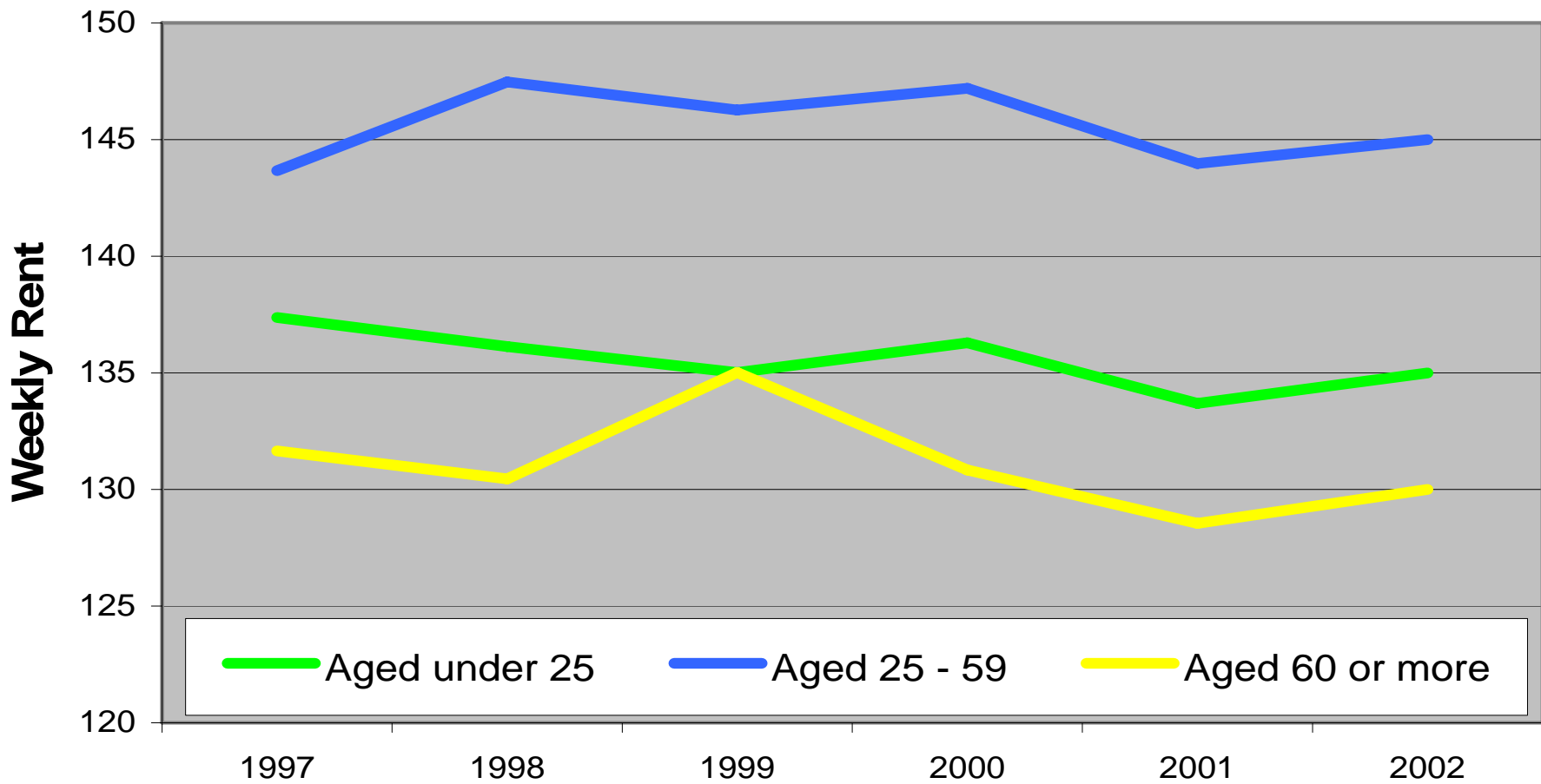


- Single persons
- Sole parent, income support
- Sole parents - family assistance only
- Couple, no children
- Couple with children - income support
- Couples with children - family assistance only

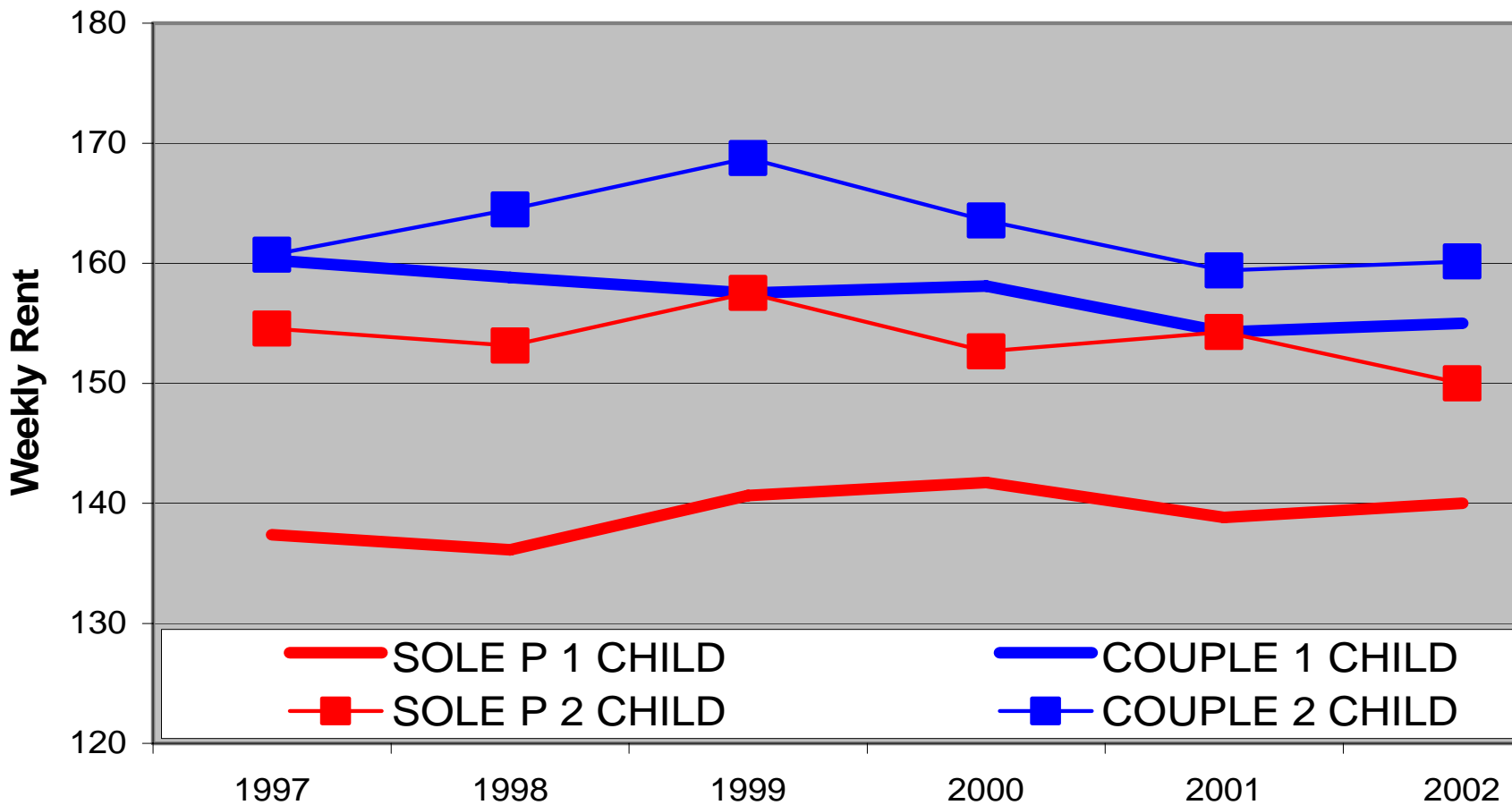
### Median Real Rents (\$2002) - Single no children



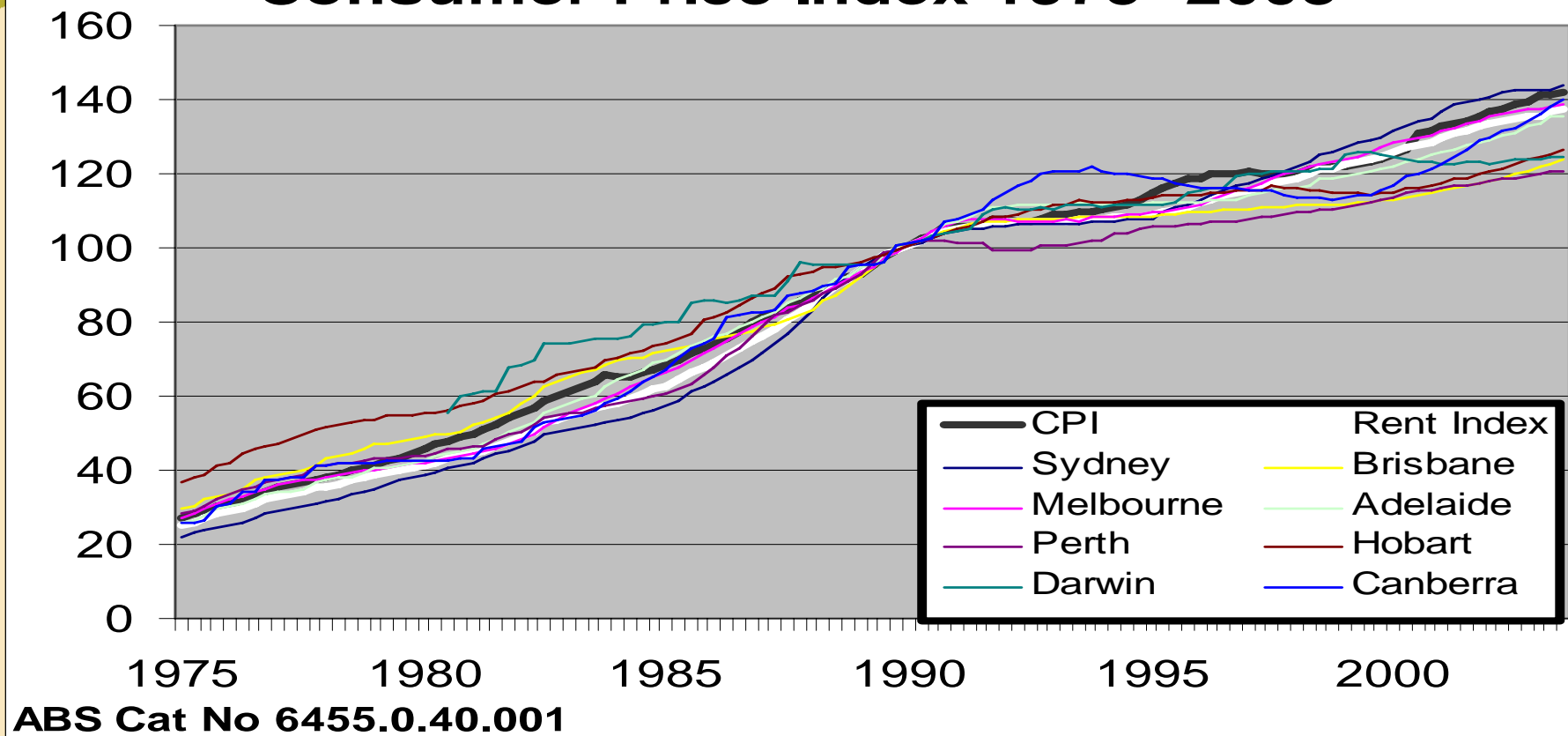
### Median Real Rents (\$2002) - Couple no children



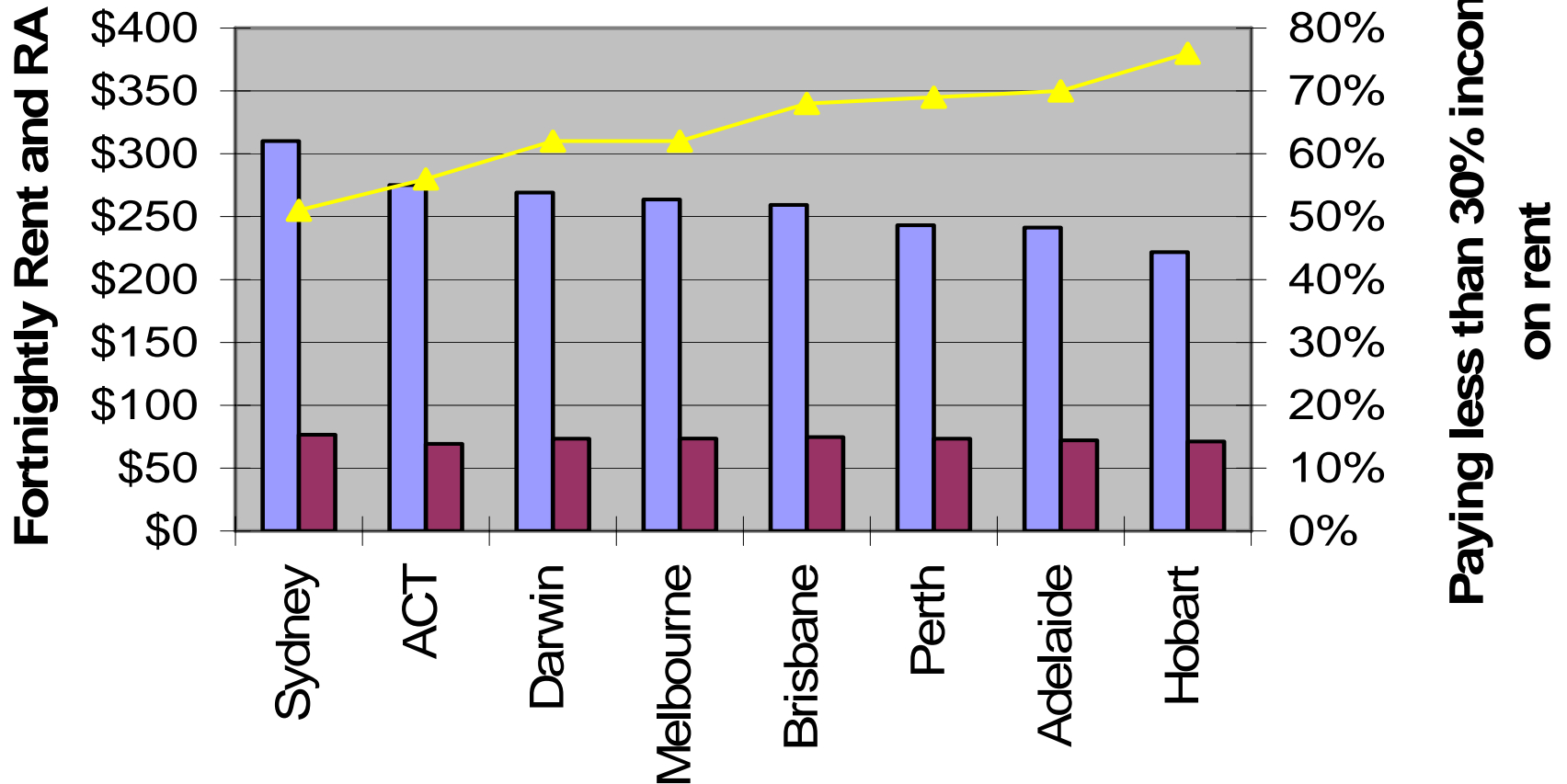
### Median real Rents (\$2002) - families with children



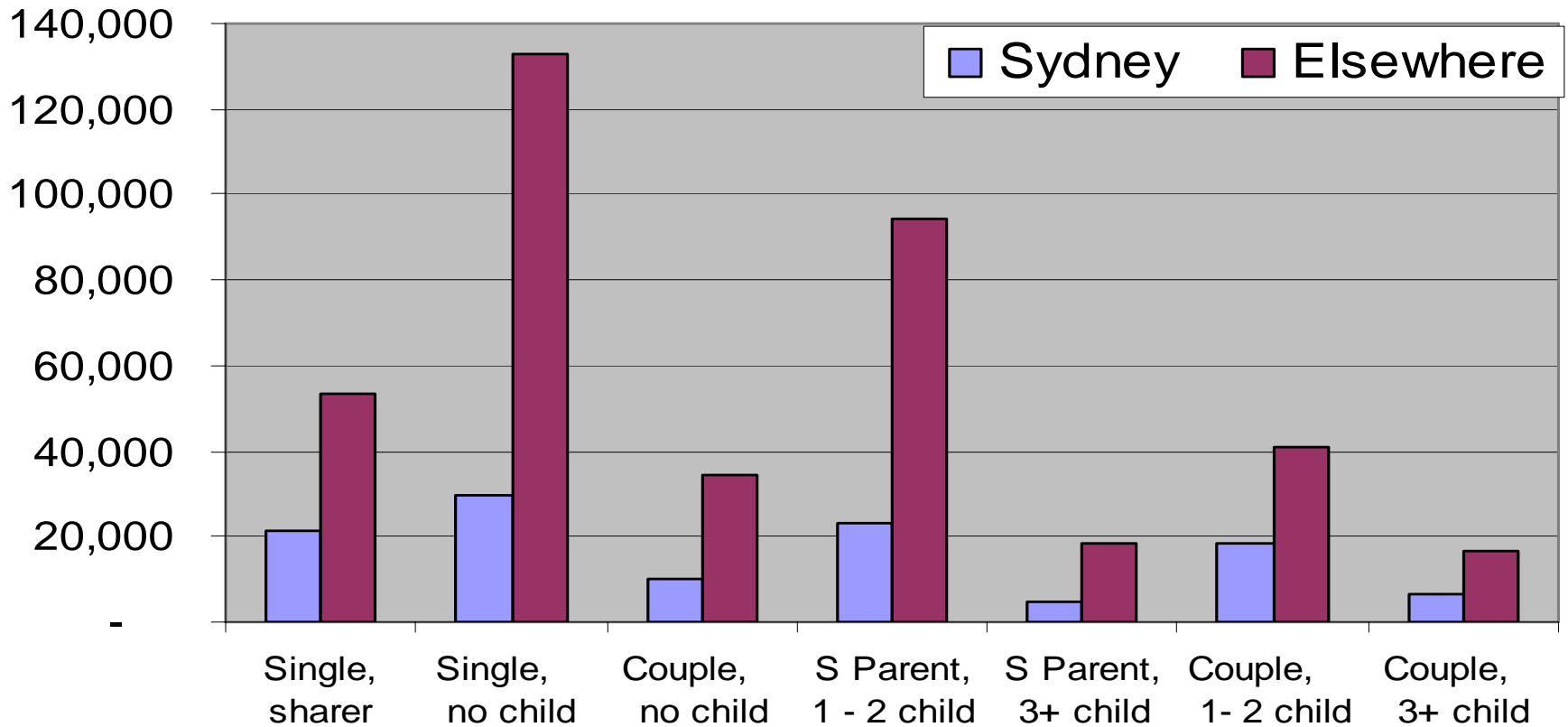
## Private Rent and all Groups, Consumer Price Index 1975- 2003



## Rent, Rent Assistance & affordability



## Number getting Maximum Rate Rent Assistance



**For further information contact me at  
martin.burgess @Facs.gov.au  
ph (02) 6212 9496**

**Access to administrative data for research purposes may be  
obtained through :**

- AIHW – david.wilson@aihw.gov.au
- FaCS - [HousingSupport@facs.gov.au](mailto:HousingSupport@facs.gov.au)