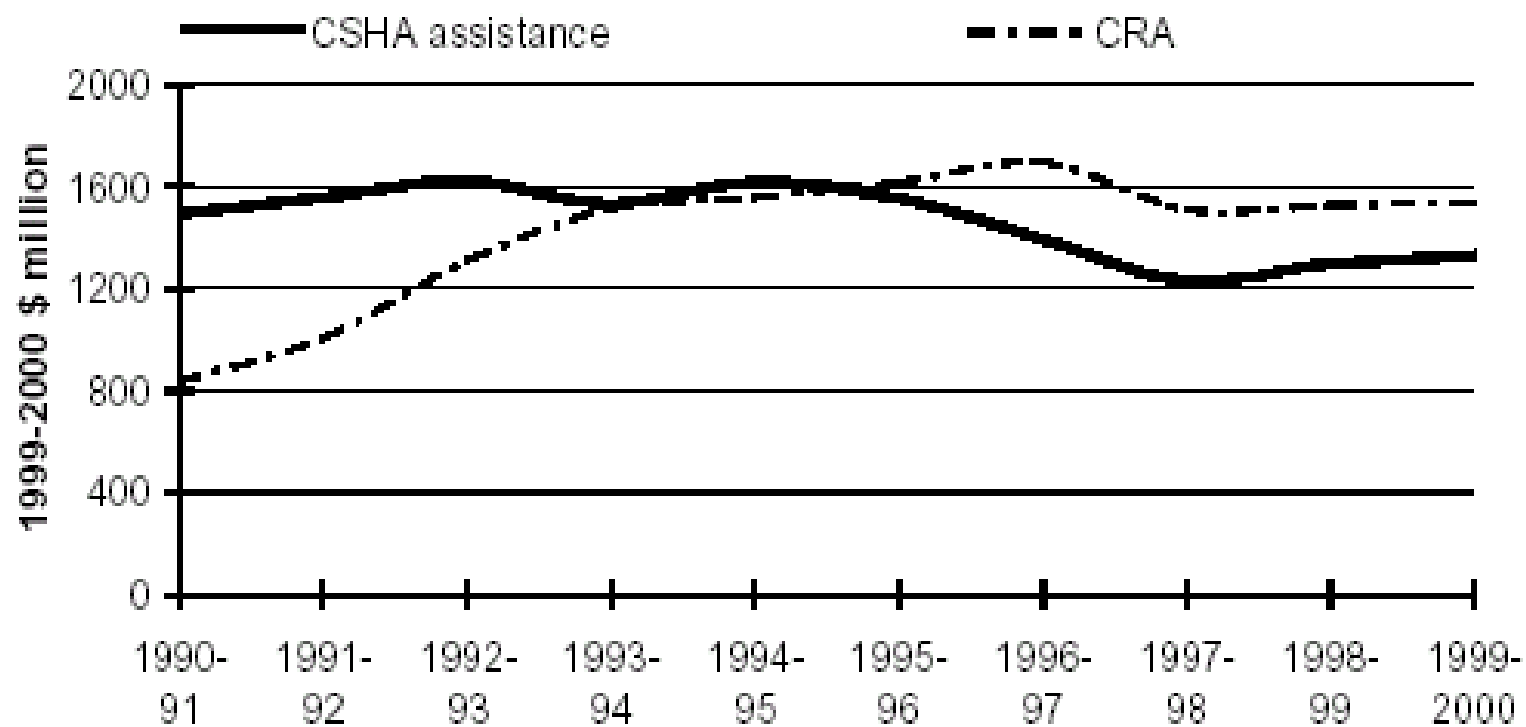


## Real government expenditure on CSHA and CRA assistance



# The Housing Show

## Levels of Government

**Commonwealth Government**

**State and Territory Governments**

**Local Government**

**Constitutional base**

**CSHA  
Bi-lateral  
Agreements**

**State Housing Legislation**

**Alternative  
Housing Models**

**Planning Regulation  
Zoning Building Regulations**

## Housing Related Assistance

Macro-economic policy  
Funding for CSHA  
Income Support & RA  
Tax subsidies: Negative Gearing, Capital Gains  
Assistance to Home-owners

Public & Community Housing  
Home-Loan product  
Private Rental Assistance: Bond Loans  
RTA Legislation  
Tenancy Advice/Advocacy  
State Environment Planning

Community Development  
Management of Parks and Public Spaces  
Development approval/Planning  
Affordable Housing

**H O M E L E S S   P E O P L E**

## Housing Tenancy Features For Tenants

<b>Features</b>	<b>Alternative Housing Delivery Models BHC</b>	<b>Long-term Community Housing</b>	<b>Private Rental Market</b>	<b>Public Housing</b>
<b>Affordability</b>	<b>Bit better than PRM</b>	<b>Affordable 30% of income or less</b>	<b>Form some</b>	<b>affordable</b>
<b>Tenure</b>	<b>TBA</b>	<b>Secure</b>	<b>Secure for at least six months</b>	<b>secure</b>
<b>Management</b>	<b>Board and Executive</b>	<b>Community management committee/ DoH/ Housing Minister</b>	<b>Real Estate Agent</b>	<b>DoH/ Housing Minister</b>
<b>Accountability</b>	<b>Complex</b>	<b>Indirect</b>	<b>Complex</b>	<b>Direct</b>
<b>Rights</b>	<b>Some ability to exercise housing rights</b>	<b>Some ability to exercise housing rights depending on agency</b>	<b>Limited ability to exercise housing rights</b>	<b>High ability to exercise housing rights</b>
<b>Participation</b>	<b>To be negotiated</b>	<b>High levels</b>	<b>Almost none</b>	<b>High level</b>
<b>Governance</b>	<b>Indirect and removed</b>	<b>Indirect but able</b>	<b>Indirect and removed</b>	<b>Direct</b>